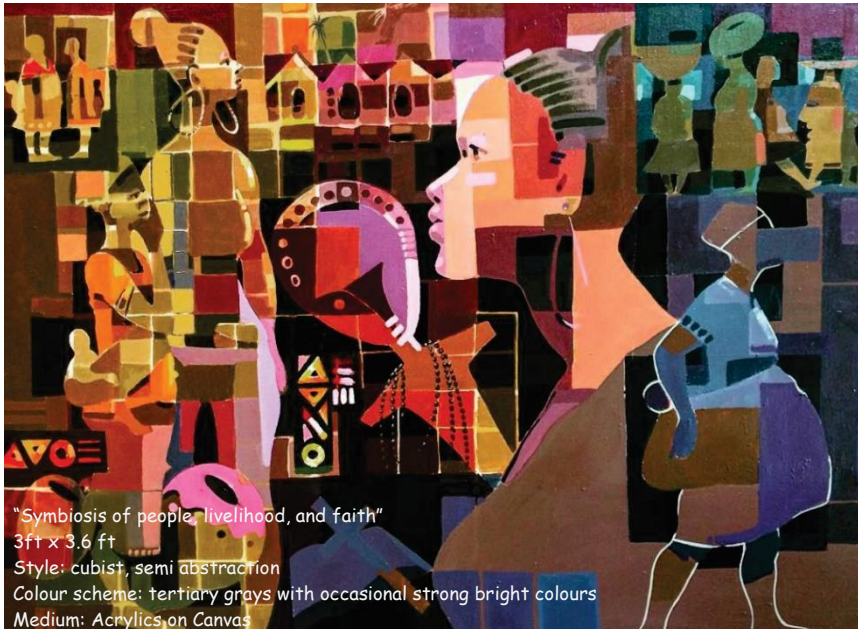




## About the cover

Open  
Access



"Symbiosis of people, livelihood, and faith"  
3ft x 3.6 ft  
Style: cubist, semi abstraction  
Colour scheme: tertiary grays with occasional strong bright colours  
Medium: Acrylics on Canvas

The story of human existence cannot be told without identifying with the various attributes meant to enhance our survival

"Symbiosis of people, livelihood, and faith"

A painting inspired by the unquenchable human search for survival.

Tabi Crentsil (2017). "Symbiosis of people, livelihood, and faith", Accra, Ghana. Dimensions: 91.44 x 109.73

### "Symbiosis of people, livelihood, and faith"

Attributes of human survival

#### Artist's perspective

The painting captures three concepts of the basic needs of humanity. The first highlights the concept of people and procreation. The Akuaba doll represents the quest of women hoping to conceive a child. The cross and the Bible emphasize their belief that God cannot be ruled out. The second concept is expressed in humanity's need for shelter. The huts are symbolic of where to lay our heads and the clothes to keep us warm. The third concept is expressed in humanity's quest for food, water and medicine. Earthenware is the traditional means of holding water, food and medicine.

Take a journey through the painting and identify with the attributes meant to enhance humanity's survival. The rest of the story lies with the viewer.

A production from Tabi Crentsil, 2017

#### Editors' view

In an era of evidence-based scientific practice, all fields related to science are perpetually relying on well-conducted research to back their practice. Looking into the future, this provides a promising window of opportunity to expand the frontiers of science and to improve the world at large. A continuous shift towards reliance on facts rather than fiction. The Akuaba doll that symbolizes procreation, resonates with the aspirations of the HIS Journal to continue to publish 'must read' peer-reviewed articles that will impact the scientific world greatly. As we continue to produce one edition of the journal after another, we intend to move a notch higher by the day and give our readership a potpourri of all the ingredients that will meet the taste of the contemporary scientist. In this regard, just as the earthenware symbolizes a container for holding water, food and medicine which are essential requirements for life, we hope that the HSI Journal will serve a menu of publications that will generate important knowledge and improve our lives in the long run.

#### How to cite

Crentsil T (2022) About the cover "Symbiosis of people, livelihood, and faith". Health Sciences Investigations Journal 3 (1): <http://doi.org/10.46829/hsijournal.2022.6.3.1.282>.  
Email: [tabicrentsil@gmail.com](mailto:tabicrentsil@gmail.com). WhatsApp: +233 245390591

Visit or download articles from our website <https://www.hsijournal.ug.edu.gh>