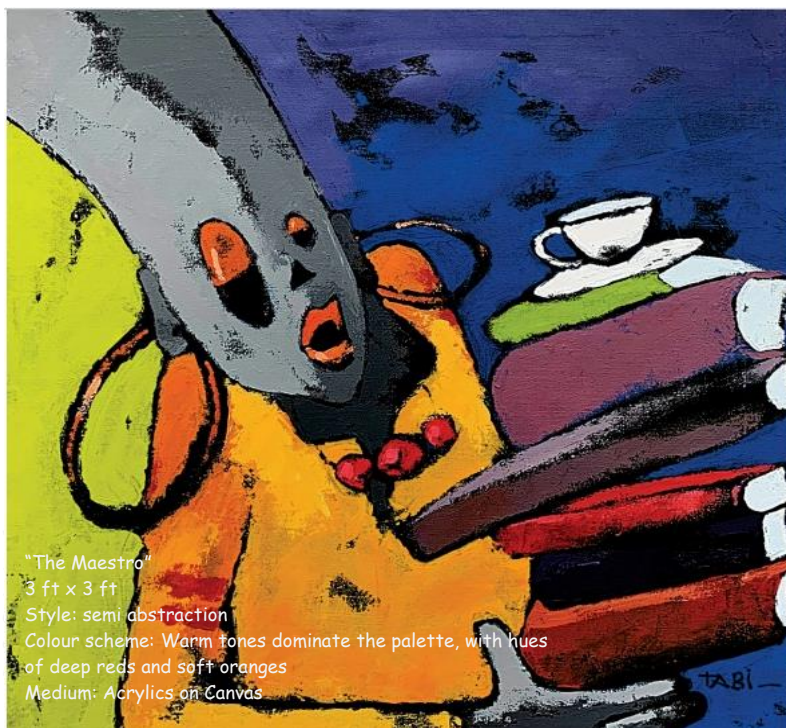




About the cover

Open
Access



"The Maestro"
3 ft x 3 ft
Style: semi abstraction
Colour scheme: Warm tones dominate the palette, with hues of deep reds and soft oranges
Medium: Acrylics on Canvas

Tabi Crentsil (2024). "PhD", a female who has reached the esteemed academic milestone of obtaining a PhD.

"PhD"

A painting that celebrates the pursuit of academic knowledge among women.

Artist's perspective

In appreciation, the stack of hefty books she carries symbolizes the extensive research and study she has undertaken to attain her PhD. Secondly, the teacup sitting on top of the books is a powerful symbol of the countless sleepless nights spent studying and researching. It represents the sacrifice and dedication that is required to achieve such a high level of academic success. The bright orange colours of the female's dress, the red necklace, and the lemon green background add a sense of vibrancy and energy to the painting, reflecting passion and determination. Overall, the painting "PhD" is a powerful and symbolic representation of the journey towards knowledge and academic achievement. The portrait celebrates the challenges, resilience, and triumphs of women in academia.

Take a journey through the painting and identify with the attributes. The rest of the story lies with the viewer.

A production from Tabi Crentsil, 2024

The painting is titled "PhD" and it is a striking and vibrant depiction of a female who has achieved the prestigious academic milestone of earning a doctorate. The painting showcases a female awash in a riot of vibrant colours. "PhD" is a visually arresting work. Does the artist portray the joy of achievement or the weight of knowledge?

This potrait serves as a reminder of the hard work, dedication, and sacrifice that is required to reach such a significant milestone in one's academic career.

Editors' view

The artwork "PhD" encapsulates the odyssey of a doctoral student in health sciences. It also highlights the rigorous research process and the personal sacrifices made to pursue knowledge. A PhD programme typically involves a significant workload and demands long hours. This relentless pressure often leads to sleep deprivation, mirrored by the teacup in the painting. The intense focus on research productivity can exacerbate stress and contribute to burnout. The balance between demanding research projects and personal lives adds another layer of difficulty for PhD students. While these challenges affect all students, females in health sciences may face additional hurdles. The woman in the painting radiates determination, reflecting the resilience that many PhD students embody. Crucial aspects of navigating the PhD journey include excellent support from mentors and colleagues and prioritizing mental health. The artwork offers a powerful visual narrative of the demanding path towards a PhD. The HSI Journal recognizes the challenges faced by PhD students, particularly females, and advocates for research cultures that empower leaders and fuel breakthroughs.

How to cite

Crentsil T (2024) About the cover "PhD". Health Sciences Investigations Journal 5(1):585. <http://doi.org/10.46829/hsijournal.2024.6.5.1.585>. Email: tabicrentsil@gmail.com. WhatsApp: +233 245390591