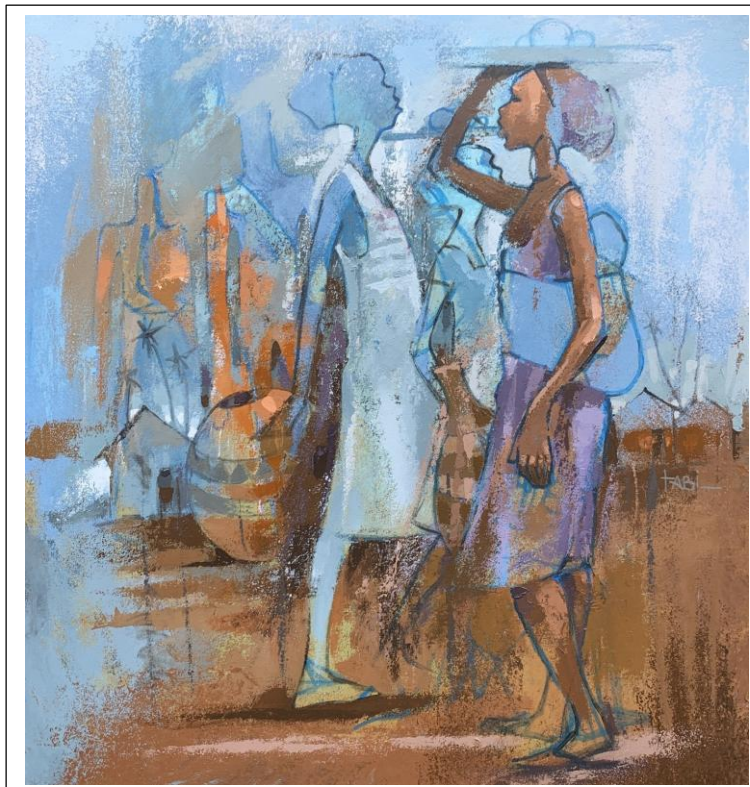




About the cover

Open
Access



A production from Tabi Crentsil, 2025

There is a quiet spirit in how the women and landscape merge. They seem to move as one with the land, the air, and the rhythm of their lives. Take a journey through the painting and identify with the attributes. The rest of the story lies with the viewer.

"Perception"

The painting invites viewers to reflect on the subjectivity of perception and the potential for unity and understanding despite apparent differences.

Artist's perspective

This painting shows a calm moment in a coastal community. The women in motion, one with a tray on her head and another fading into the background, reflect strength, work, and transition. Their unhurried movements suggest the end of a day's hawking or the quiet walk home.

Soft blues and warm browns set a peaceful but grounded mood. The blues hint at the sea and calm, while the browns and oranges suggest sun, dust, and daily life. Together, they show both tiredness and endurance, the close of day and the will to keep going.

The figures are painted in a loose, semi-abstract style. Their shapes blend into one another, showing connection and shared experience. In the background, the huts and coconut trees place the scene in a coastal Ghanaian village, yet the feeling is universal.

There is a quiet spirit in how the women and landscape merge. They seem to move as one with the land, the air, and the rhythm of their lives. *Take a journey through the painting and identify with the attributes.* The rest of the story lies with the viewer.

Editors' view

This artwork captures a quiet moment in a coastal community, where the day eases into reflection. The women walking home, one carrying her tray and another fading softly into the background, reflect resilience shaped by routine and shared experience. The soft blues suggest the calm of the shoreline, while the warm browns and oranges remind us of the daily work that fills each day. Together, these colours create a gentle balance of calm and labour, a balance that mirrors our profession, where tiredness and commitment often exist side by side. In their blended forms, we see connection, interdependence and the shared responsibility that supports community life.

For the HSI Journal, this scene aligns with our purpose. Just as these women move in steady rhythm with their surroundings, the health sciences community advances through collective effort. Researchers, clinicians, reviewers, educators and the administrators who support the HSI office each play a vital role in strengthening the work that pushes science forward.

Our mission is to elevate scientific work from Ghana and across the world, especially from regions with limited resources. This artwork reminds us that progress often begins quietly and grows through patience, collaboration and shared purpose.

How to cite

Crentsil T (2025) About the cover "Perception". Health Sciences Investigations Journal 7(2):1244. <https://doi.org/10.46829/hsijournal.2025.12.7.2.1244> Email: tabicrentsil@gmail.com.